



AntibodKIR3.4 Polyclonaly

Catalog No	YP-Ab-16445
Isotype	IgG
Reactivity	Human;Rat;Mouse;
Applications	WB;IHC
Gene Name	KCNJ5
Protein Name	G protein-activated inward rectifier potassium channel 4
Immunogen	The antiserum was produced against synthesized peptide derived from human KCNJ5. AA range:370-419
Specificity	KIR3.4 Polyclonal Antibody detects endogenous levels of KIR3.4 protein.
Formulation	Liquid in PBS containing 50% glycerol, 0.5% BSA and 0.02% sodium azide.
Source	Polyclonal, Rabbit,IgG
Purification	The antibody was affinity-purified from rabbit antiserum by affinity-chromatography using epitope-specific immunogen.
Dilution	WB 1:500-2000;IHC-p 1:50-300
Concentration	1 mg/ml
Purity	≥90%
Storage Stability	-20°C/1 year
Synonyms	KCNJ5; GIRK4; G protein-activated inward rectifier potassium channel 4; GIRK-4; Cardiac inward rectifier; CIR; Heart KATP channel; Inward rectifier K(+) channel Kir3.4; IRK-4; KATP-1; Potassium channel; inwardly rectifying subfamily J membe
Observed Band	48kD
Cell Pathway	Membrane ; Multi-pass membrane protein .
Tissue Specificity	Islets, exocrine pancreas and heart. Expressed in the adrenal cortex, particularly the zona glomerulosa.
Function	function:This potassium channel is controlled by G proteins. Inward rectifier potassium channels are characterized by a greater tendency to allow potassium to flow into the cell rather than out of it. Their voltage dependence is regulated by the concentration of extracellular potassium; as external potassium is raised, the voltage range of the channel opening shifts to more positive voltages. The inward rectification is mainly due to the blockage of outward current by internal magnesium. Can be blocked by external barium.,similarity:Belongs to the inward rectifier-type potassium channel family.,subunit:May associate with GIRK1 and GIRK2 to form a G-protein-activated heteromultimer pore-forming unit. The resulting inward current is much larger.,tissue specificity:Islets, exocrine pancreas and heart.,



Background

Potassium channels are present in most mammalian cells, where they participate in a wide range of physiologic responses. The protein encoded by this gene is an integral membrane protein and inward-rectifier type potassium channel. The encoded protein, which has a greater tendency to allow potassium to flow into a cell rather than out of a cell, is controlled by G-proteins. It may associate with two other G-protein-activated potassium channels to form a heteromultimeric pore-forming complex. [provided by RefSeq, Jul 2008],

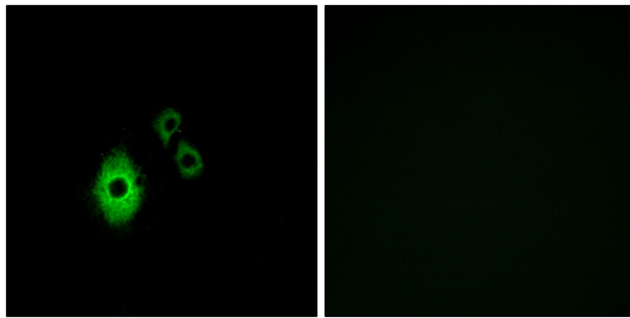
matters needing attention

Avoid repeated freezing and thawing!

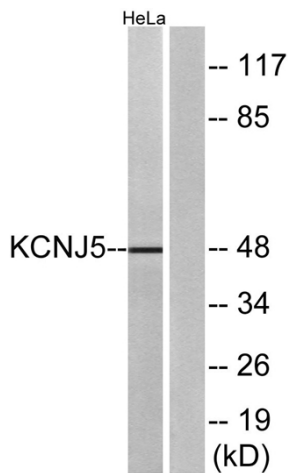
Usage suggestions

This product can be used in immunological reaction related experiments. For more information, please consult technical personnel.

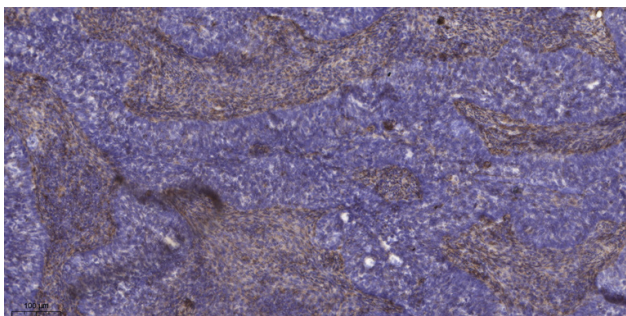
Products Images



Immunofluorescence analysis of A549 cells, using KCNJ5 Antibody. The picture on the right is blocked with the synthesized peptide.



Western blot analysis of lysates from HeLa cells, using KCNJ5 Antibody. The lane on the right is blocked with the synthesized peptide.



Immunohistochemical analysis of paraffin-embedded human cervical carcinoma. 1, Antibody was diluted at 1:200(4° overnight). 2, Tris-EDTA,pH9.0 was used for antigen retrieval. 3,Secondary antibody was diluted at 1:200(room temperature, 45min).